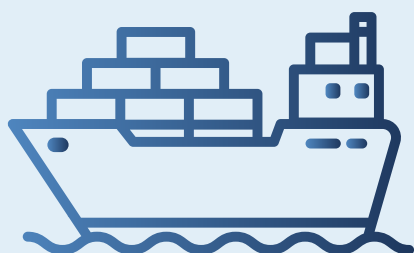




TRADE REPORT 2020

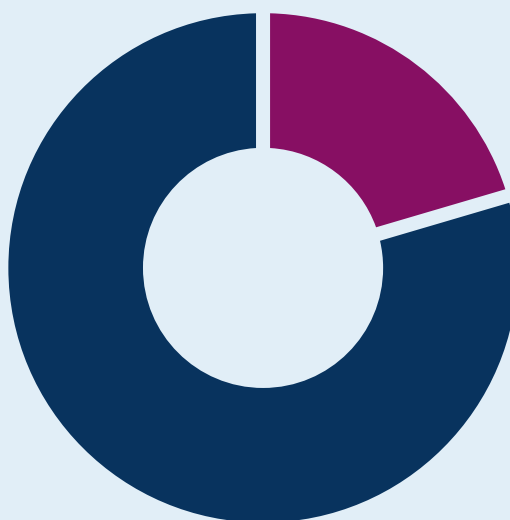
SHIP VISITS



2,205

ship visits in 2020

2,296 in 2019



COAL

2020 | 1,754
2019 | 1,813



DIVERSIFIED TRADE

2020 | 451
2019 | 461

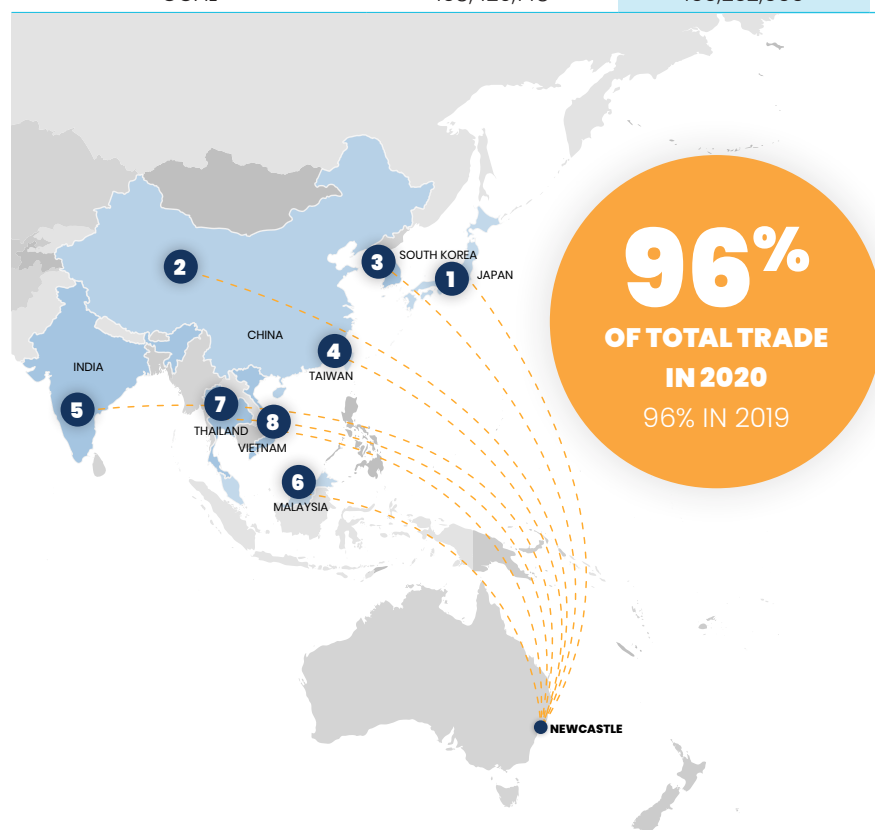


CRUISE SHIPS

2020 | 0
2019 | 22

COAL TRADE

COMMODITY EXPORTS	MASS TONNES		TRADE VALUE (\$ MILLION)	
	2020	2019	2020	2019
COAL	158,429,148	165,252,666	\$18,559	\$17,913



DESTINATION	YEAR	MT	%
1. JAPAN	2020	65.7	41.5
	2019	69.7	42.2
2. CHINA	2020	25.3	16
	2019	34.6	20.9
3. SOUTH KOREA	2020	21	13.3
	2019	20.6	12.4
4. TAIWAN	2020	20.9	13.2
	2019	21.2	12.8
5. INDIA	2020	6.5	4.1
	2019	2.3	1.4
6. MALAYSIA	2020	4.8	3
	2019	5.2	3.1
7. THAILAND	2020	3.8	2.4
	2019	3	1.8
8. VIETNAM	2020	3	1.9
	2019	3.5	2.1
OTHER	2020	7.4	4.6
	2019	3	1.8

EXPORTS

COMMODITY EXPORTS	MASS TONNES		TEUS		TRADE VALUE (\$ MILLION)	
	2020	2019	2020	2019	2020	2019
Aluminium	49,409	9,397	0	0	\$129	\$24
Ammonia	119,659	140,518	27	21	\$81	\$96
Ammonium Nitrate	468	15,077	22	16	\$0	\$5
Boutique Coal	0		0		\$0	
Concentrates	399,033	452,115	0	0	\$1,364	\$1,336
General Cargo	73,058	46,273	66	1,370	\$105	\$77
Grinding Media	14,517		469	634	\$15	
Machinery, Project Cargo & Vehicles	10,093	7,585	441	959	\$101	\$76
Meals & Grains	10,520	14,614	0	683	\$2	\$3
Pitch & Tar Products	86,586	93,221	0	0	\$56	\$66
Silica Sand	6,048	0	0	0	\$0	\$0
Steel	42,200	58,304	279	290	\$117	\$162
Timber	1,025	1,842	0	0	\$2	\$2
Wheat	304,345	41,344	23	283	\$99	\$12
Exports (Non Coal)	1,116,961	880,290	1,327	2,232	\$2,071	\$1,859
Total Exports (All Trades)	159,546,109	166,132,956	1,327	2,232	\$20,630	\$19,772



COMMODITY EXPORTS OVERVIEW

COMMODITY EXPORTS	DEFINITION	DESTINATIONS 2020	DESTINATIONS 2019
Aluminium		Japan	Japan
Ammonia		Australia & New Zealand	Australia & New Zealand
Ammonium Nitrate		New Zealand & Papua New Guinea	Australia & New Zealand
Boutique Coal		Australia	
Concentrates	Copper ore concentrates, zinc ore concentrates and lead ore concentrates	China, Taiwan, Philippines	China & Australia
General Cargo		China, New Zealand, Australia, Papua New Guinea, Taiwan, Japan, Solomon Islands, India, New Caledonia & South Korea	South Korea, Australia, New Zealand, United States, Philippines, China, Taiwan, Philippines & United Kingdom
Grinding Media		Indonesia & Papua New Guinea	
Machinery, Project Cargo & Vehicles	Mining machinery, agricultural machinery, power generation machinery, construction machinery, rail wagons, passenger vehicles and commercial vehicles.	Indonesia, Papua New Guinea & New Zealand	Australia, Indonesia, New Zealand & Turkey
Meals & Grains	Barley, sorghum, canola, maize, canola meal and cottonseed meal.	China, Australia, Papua New Guinea & New Zealand	New Zealand
Pitch & Tar Products	Pitch, coal tar, tar, carbon black and creosote.	Japan & Australia	Japan, Philippines & Australia
Silica Sand		Philippines	
Steel		Indonesia & New Zealand	Indonesia, United States, Indonesia & New Zealand
Timber		Australia & New Zealand	New Zealand
Wheat		Egypt, Italy, Papua New Guinea, Vietnam, Japan, Fiji, Yemen, Indonesia & India	Japan & New Zealand

IMPORTS

COMMODITY IMPORTS	MASS TONNES		TEUS		TRADE VALUE (\$ MILLION)	
	2020	2019	2020	2019	2020	2019
Alumina	1,152,336	1,125,549	0	0	\$508	\$496
Ammonia	15,002	32	0	0	\$10	\$0
Ammonium Nitrate	63,091	69,699	0	0	\$19	\$21
Cement	248,823	342,560	0	0	\$2	\$2
Fertiliser	425,538	386,089	0	0	\$160	\$123
Fuels	1,814,975	1,842,194	0	0	\$2,774	\$2,831
General Cargo	81,843	84,777	1,438	3,017	\$188	\$123
Grinding Media	0	0	0	0	\$0	\$0
Machinery, Project Cargo & Vehicles	32,221	31,934	85	20	\$321	\$319
Magnetite	116,586	100,645	0	0	\$35	\$30
Meals & Grains	385,379	415,085	0	0	\$217	\$166
Petroleum Coke	214,555	235,127	0	0	\$76	\$83
Pitch & Tar Products	87,055	120,351	0	0	\$59	\$91
Steel	199,887	149,813	46	11	\$555	\$416
Timber	15,026	20,596	62	56	\$1	\$1
Wheat	90,500	314,856	0	0	\$30	\$95
Total Imports (Non Coal)	4,942,817	5,239,307	1,630	3,104	\$4,955	\$4,797

COMMODITY IMPORTS OVERVIEW

COMMODITY IMPORTS	DEFINITION
Fertiliser	Superphosphate, sulphate of ammonia, potash, urea, phosphates and other general manufactured fertilisers
Machinery, Project Cargo and Vehicles	Industrial machinery, power generation machinery, construction machinery, rail wagons, passenger vehicles and commercial vehicles
Meals and Grains	Soybean meal
Pitch and Tar Products	Pitch, coal tar and carbon black

NOTES

- i. Trade values are Port of Newcastle's (PON) estimates based on commodity values and prices obtained periodically from sources such as the Australian Bureau of Agricultural and Resource Economics and Sciences (ABARES), Bureau of Resources and Energy Economics (BREE), Australian Bureau of Statistics (ABS), and World Bank.

The trade values are provided for information only and should not be relied on by any party. Any party seeking to rely on information on trade value should undertake its own assessment. Whilst care has been taken in the preparation of this material these are only value estimates, PON gives no warranty as to the accuracy of these values or any of the inputs used by it to develop these estimates. Results have been rounded as appropriate.

- ii. TEU (twenty-foot equivalent unit) refers to containers handled.

TRADE ASSETS

FINANCIAL PERFORMANCE

PORT CHARGES	1 JANUARY – 31 DECEMBER (\$'000)		NOTE
	2020	2019	
Navigation Services Charge	86,390	86,259	
Wharfage	21,822	22,027	
Site Occupation	5,337	4,747	1
Security	1,358	1,254	
Utilities	102	102	
Trade Revenue	115,009	114,389	
Operations Expense – Trade Assets	38,458	36,769	2
Depreciation – Trade Assets	20,616	18,685	3
Allocated Overheads – Trade Assets	12,536	7,514	4
Trade Expenses	71,610	62,968	5
Operating Profit from Trade Operations	43,399	51,421	
Trade Assets	2,308,000	2,340,000	6,7

NOTES

1. Site Occupation includes berthside storage revenue.
2. Operations Expense – Trade Assets is made up of salary and wages, repairs and maintenance, external services, fuel and security. The costs relate to dredging, survey, repairs, maintenance, navigation services fee and Port Community Contribution and other minor costs directly related to Trade Assets.
3. Depreciation – Trade Assets is the depreciation and amortisation costs specifically related to Trade Assets.
4. Allocated Overheads – indirect costs including transition costs (costs not directly related to income earning operations or capital projects) have been allocated based on relative revenue.
5. Trade Expenses exclude sublease rental, financing costs and income tax.
6. Trade Assets are those assets which generate revenue for the Company excluding those assets which are associated with property leasing activities.
7. The value of Trade Assets as at 31 December 2020 is as reported per the audited financial statements at 31 December 2020.



**LEVEL 4, 251 WHARF ROAD
NEWCASTLE NSW 2300
AUSTRALIA**



+61 2 4908 8200
info@portofnewcastle.com.au
portofnewcastle.com.au