

# ACTIVE ENVIRONMENTAL Management

September 2019



**PORT of  
NEWCASTLE**



# COMMITTED STEWARDS

“Port of Newcastle is proud to be the custodian of the Port for the NSW government and the people of NSW.”

## We Manage:



**20**

individual heritage assets of local and State significance

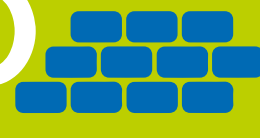


**777ha**

of land

**1,900**

metres of break walls



**13km**

of roads

## To date we have:



spent

**\$1.33 million**

in stormwater infrastructure maintenance and improvements

spent

**\$1.9million**

to demolish asbestos contaminated buildings

spent  
**\$33 million**



on bulk handling infrastructure environmental improvements

This included the safe removal of  
**1,500 tonnes**  
of asbestos contaminated soil



All timber and concrete structural materials were  
**recycled**



spent

**\$640,000**

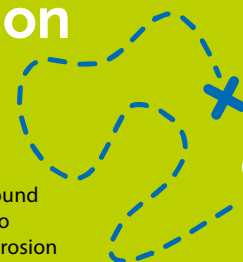
understanding the contamination status of Port land through the Baseline Contamination study

spent  
**\$1.3million**

to renew

**580**

metres of seawall around Walsh point to prevent soil erosion



**969metres** landscape buffer on port lands

**90ha** of remediated land responsibly managed

committed



**\$1.6 million**

to Carrington Hydraulic Engine House Restoration Project



## CASE STUDY

### Carrington Hydraulic Engine House

Port of Newcastle has commenced a \$1.6 million project to restore the facade of the State Heritage listed Carrington Hydraulic Engine House.

In February 2017 the NSW government announced \$500,000 in funding via the Newcastle Port Community Contribution Fund towards the restoration of the building's historic facade and the creation of an outdoor community space. Port of Newcastle will contribute \$700,000.



More online...  
[portofnewcastle.com.au](http://portofnewcastle.com.au)



## CASE STUDY

### Managing industrial legacy

The Port has seen over 200 years of heavy industry including steelworks, shipbuilding, chemical manufacturing, minerals and metal handling and transportation.

Port of Newcastle has conducted a port-wide study to better understand the condition of the land covered by the port lease.

As part of the study, 257 test pits, 425 soil bores, 59 new groundwater wells and 145 existing ground water wells were sampled.

Port of Newcastle is working closely with tenants and government agencies to develop management strategies that address the port's industrial legacy.



Pictured: a ground water test pit.



# BEYOND OUR BOUNDARIES

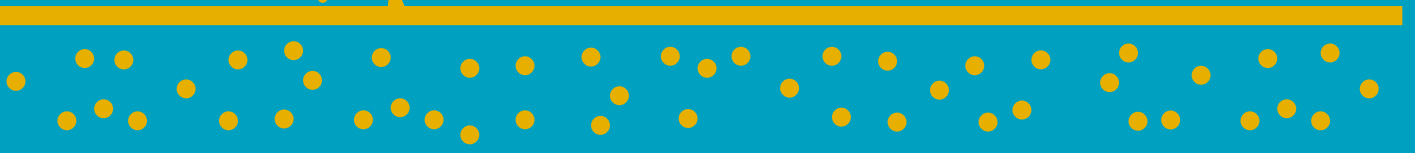
“We are active contributors to the management of local environmental initiatives.”

To date:



## \$50,000

spent on habitat restoration works within the Hunter Wetlands National Park



## 115ha

of land managed to remove noxious weeds

## 300kg of litter

removed during the 2018 Port wide litter pick



## 2,297

trees planted



Facilitated the import of

## 170

wind turbines for renewable energy projects

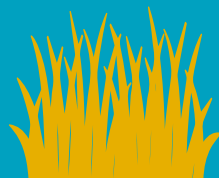
## \$83,545

provided in community grants in support of environmental initiatives



## >200,000 tonnes

of clean dredged sand placed off shore from Stockton Beach to help restore sand that has been lost through erosion



## \$60,000

spent to date monitoring the health of salt marsh around the Port



**Pictured: Tree planting on Kooragang Island.**



## **Investment in local environmental initiatives**

Since the Port lease commenced in May 2014, Port of Newcastle has awarded more than \$700,000 towards community projects spanning, education, the environment, youth leadership and development and community health and well-being.

To date, the Port has awarded more than \$80,000 in support of environmental projects delivered by local community groups including Conservation Volunteers Australian, Kooragang Volunteers, Newcastle Botanic Gardens, Hunter Wetlands Centre and Tom Farrell Institute for the Environment.

**The Hunter Wetlands National Park, home to the internationally significant RAMSAR wetlands, is our most important ecological neighbour.**



**Pictured: Saltmarsh monitoring.**



## **Saltmarsh monitoring**

Saltmarshes play a huge role in the aquatic food web, the delivery of nutrients to coastal waters as well as support for terrestrial animals, such as shore birds.

In NSW, saltmarsh is listed as an endangered ecological community under the Threatened Species Conservation Act 1995.

Port of Newcastle conducts annual monitoring that provides valuable data on the status and health of coastal salt marsh in the lower Hunter River area.



# MANAGING OUR ENVIRONMENTAL FOOTPRINT

“We are committed to managing the environmental impacts of our operations and developing the port in a sustainable manner.”

**We have:**

**29** installed smart water meters



**25** installed smart energy meters



**20,000 litres** of hazardous waste responsibly destroyed



**1,500 tonnes** of asbestos contaminated soil responsibly managed

**\$600,000 investment**



in engine modifications on the David Allan Dredge to reduce emissions and lubricant consumption

Switched to **ultra-low** sulphur diesel in our marine operations

**115ha** of land managed to remove noxious weeds



**60% reduction** in oil consumption

**4000ltr/year reduction** in lube oil consumption, which is a saving of \$21,600/yr



**To date we have diverted from landfill:**



**1109kg** in e-waste



**47.4kg** of batteries



**5,700** coffee pods



**469 tonnes** of concrete



**177** skip bins of paper & cardboard



**81** mobile phones

**292** toner cartridges

**993 tonnes** of scrap metal



## CASE STUDY

### Water quality

The quality of the port's water is synonymous with sustainability and respect for the environment.

Port of Newcastle actively monitors the physical - chemical composition of water quality in the port area to inform positive stormwater management decisions.

By working with port tenants and the Environment Protection Authority, the Port can help drive improved outcomes that contribute towards a sustainable port environment.





# OUR SYSTEMS AND SUPPORT

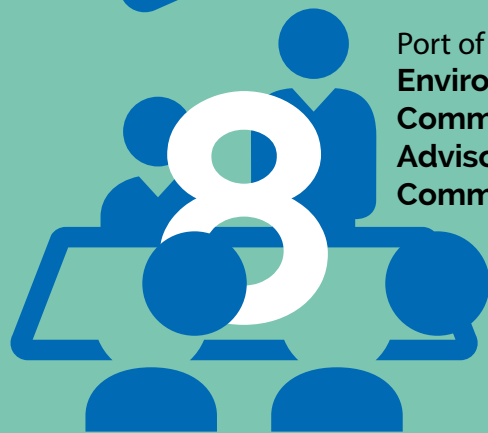
“Our systems support compliant and efficient operations and Port of Newcastle is committed to adopting sustainable practices.”

## Each year we conduct:



Internal and External  
**Environmental  
audits**

Compulsory  
sustainability  
awareness training  
for all PON  
employees



**8**

Port of Newcastle  
**Environmental Steering  
Committee and Technical  
Advisory Consultative  
Committee** meetings

+ Port of Newcastle  
staff environmental  
training sessions

**42**

internal  
environmental  
audits



**1,100**

weekly environmental inspections of our facilities and berths



Rolled out new Environment and  
Sustainability Policy in 2018

Maintain the Port of Newcastle's  
Environmental Management  
System based on the principles  
of the AS/NZS ISO 14001



Member of the Newcastle  
Community Consultative  
Committee on the  
Environment





## CASE STUDY

# Striving to develop a culture of continuous improvement and innovation.

## Our policy and systems

Port of Newcastle's activities are subject to a wide range of environmental conditions set through environmental protection licenses, planning approvals and lease conditions.

The Port's Environmental Policy outlines its commitment to environmental compliance and establishing, monitoring, reviewing and continually improving environmental objectives, targets and action plans.

Our Environmental Management Plan defines the systems and controls that Port of Newcastle applies to deliver high standards of environmental practice and ensure compliance with environmental conditions and legislation.

Port of Newcastle will be the first port in the Australian-New Zealand region to join the EcoSLC network, a network of Ports and terminals striving to achieve best practice environmental management for the port sector.

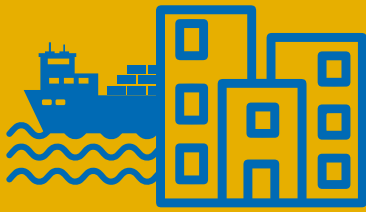


## CASE STUDY

## Supporting our tenants

Port of Newcastle encourages all port tenants to act in an environmentally responsible manner, requiring the submission of an Environmental Management Plan as part of all new lease agreements and the sharing information with members of the NewcastlePort Users Group (NPUG).

This supports compliance with relevant federal, state and local regulations by port tenants and encourages the adoption of industry best practice and management.



# CITY-PORT RELATIONS

“Developing positive synergies inside and outside the port area that create opportunity and contribute towards a resilient and sustainable city port”

# 16

Quarterly Newcastle Port User Group meetings (since 2014)



Quarterly community liaison group meetings

Active partnerships with our stakeholders



# \$900 million

household income generated by the port in the Lower Hunter\*



# 9000 jobs

created in the Lower Hunter via port activity\*



# INNOVATION/SMART PORTS

use of technology for smart efficient and sustainable operations



Awarded University of Newcastle Student Engagement Awards;

# Most Valued Partner 2018

Seasonal newsletter distributed to



# 18,000 LOCAL RESIDENTS

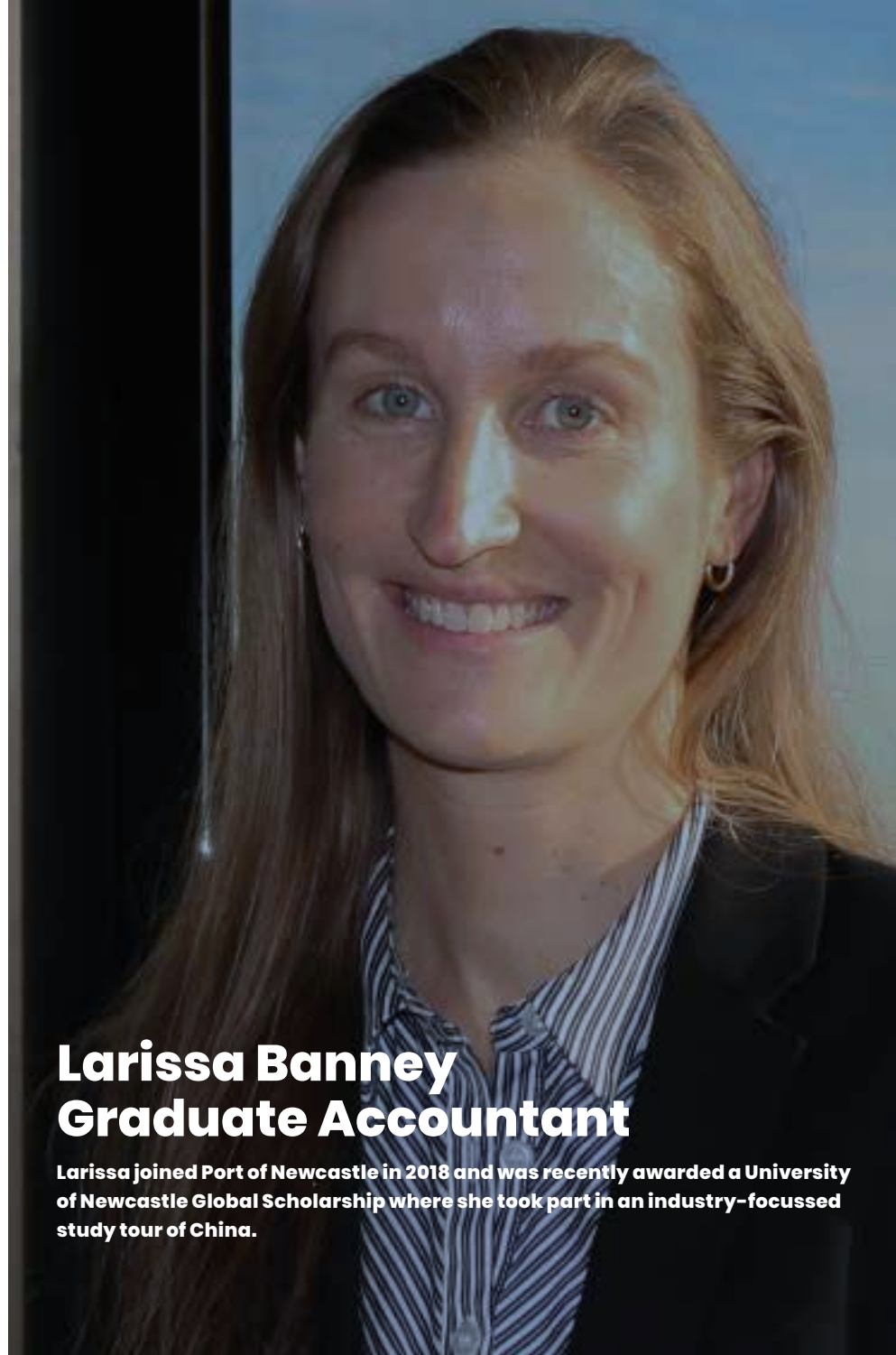
\*In 2016/17 each SHIP VISIT contributed nearly

**\$700K**  
to the local economy

**\$800K**  
to the NSW economy

**\$900K**  
to the National economy





## Larissa Banney Graduate Accountant

Larissa joined Port of Newcastle in 2018 and was recently awarded a University of Newcastle Global Scholarship where she took part in an industry-focused study tour of China.



### CASE STUDY

## Education and training

Port of Newcastle is committed to maintaining strong relations with its local education and training providers.

In 2018, the Port received the 'Most Valued Partner' award from the University of Newcastle in recognition of its successful internship program.

By offering opportunities to students through its internship program, Port of Newcastle is proud to be supporting the development of our next generation of professionals.

To date, Port of Newcastle has provided internships across a wide range of disciplines, including environmental management, finance, legal services and survey.