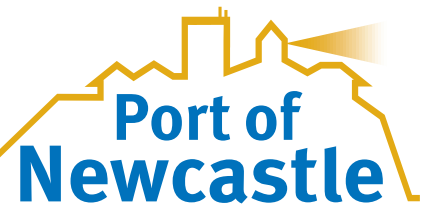


THE CHANNEL

YOUR PORT NEWSLETTER

SUMMER 2018



NEWCASTLE CRUISE TERMINAL DESIGN UNVEILED



Pictured: GHD Woodhead's design provides practical, comfortable, open space with ease of movement, while allowing travellers to visually connect with the context of the city and the unique harbour environment.

Port of Newcastle has revealed its design for a new cruise terminal which will transform the cruise passenger experience in Newcastle.

The purpose-built facility will cover approximately 3,000m² and will boast a dedicated car park, drop off bays, coach bays and a truck provisioning area.

Port of Newcastle's CEO, Geoff Crowe, said the Newcastle Cruise Terminal would provide a professional transit experience for passengers arriving in Newcastle and a positive first impression of the city.

"The traveller experience is central to GHD Woodhead's design, with harbour views, ease of movement, natural

daylight and a generous sense of space greeting passengers," said Geoff.

The new cruise terminal, to be built at the Channel Berth, will enable the Port to receive more and bigger ships in the future. It will also position Newcastle as a home port where ships can start and finish their cruise.

The \$12.7 million cruise terminal is funded by the NSW Government's Restart NSW Hunter Infrastructure Investment Fund.

Geoff said he was thrilled to share the design with the community after many months of detailed planning behind-the-scenes.

"Construction will commence in early 2018 and Novocastrians will have a cruise terminal to call their own by the end of the year," said Geoff.

A fly-through animation of the terminal design can be viewed at www.portofnewcastle.com.au



Welcome to the Summer edition of our community newsletter, *The Channel*.

I am pleased to be able to share our concept for the Newcastle Cruise Terminal. This is a significant step and it is only going to get more exciting from here.

The Channel Berth will soon be a hive of activity, with the 2018 cruise season already well underway and the construction of the cruise terminal kicking off early in 2018.

This year the Port will also be getting on with the restoration and community space work for the heritage listed Carrington Hydraulic Engine House. We are grateful for our community's support and I look forward to keeping you updated on the progress of both projects.

Newcastle is a diverse port with 25 cargoes, and we are committed to contributing to the growth and diversification of all trades.

In 2017, trade through the Port totalled 167 million tonnes. Growth was recorded in project cargo, bulk liquids, fertiliser, steel and our major trade, coal, remained steady. A record breaking 1.8 million tonnes of wheat was exported, capping off the bumper season experienced by NSW farmers.

The Port of Newcastle marked many milestones in 2017 and it was great to cap off the year with three awards. The Port was recognised nationally in the Australian Shipping Awards, receiving the Newsmaker of the Year award and a highly commended award in the Port or Terminal of the Year category.

Locally, the Port was awarded the HunterNet PKF Exporter of the Year. This is in recognition of the contribution of our port customers, service providers and agencies who collectively deliver a world-class port operation. It also recognises our collective efforts to grow and diversify all trades.

Geoff

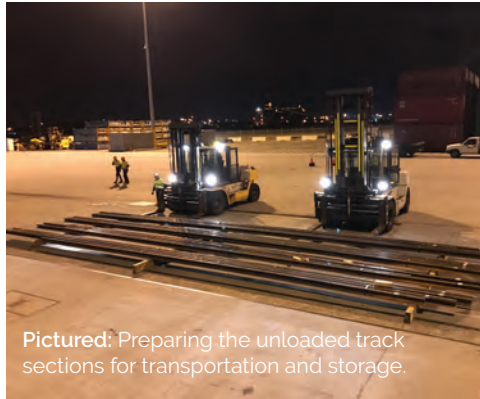
Geoff Crowe
Chief Executive Officer

AROUND THE PORT

Light rail track arrives in Newcastle

In late 2017, Port of Newcastle handled more than 12 kilometres of light rail track to be installed along the city's new light rail route.

The straight and curved sections weighed in at a total of 646 tonnes and arrived via the Port's Mayfield 4 berth from Austria.



Pictured: Preparing the unloaded track sections for transportation and storage.



Pictured: The tracks were carefully lifted from the hull by the vessel's onboard cranes.

The Port's Kooragang 2 berth to receive a facelift

Kooragang 2 (K2) is home to some of the oldest infrastructure in the Port. It is also one of the Port's hardest working common user berths, handling a diverse range of cargo including fertiliser, magnetite, meals, ammonia, vegetable oils, fuel, cement and other speciality products. Around 600,000 tonnes of loose bulk is moved by the K2 crane each year - a significant number in terms of the Port's total trade.

Port of Newcastle is investing \$30 million in the next generation in bulk handling equipment at K2. State-of-the-art crane and conveyor infrastructure is set to be introduced, incorporating the latest in safety and environmental features.

Port of Newcastle's CEO, Geoff Crowe, said it was Port of Newcastle's vision to make Newcastle the cleanest and most efficient bulk import handling facility on the Australian east coast.

"This is a long-term investment by the Port of Newcastle that will grow trade, increase efficiency and set a world-class benchmark for the benefit of our customers and the Hunter region," said Geoff.



Pictured: The K2 berth was built in the 1960s for the import of phosphate.

CURTAIN RAISES ON 2018 CRUISE SEASON



Port of Newcastle's 2018 cruise season is underway, with eight more cruise ships to visit the Port between January and April this year.

Highlights for the season include:

- 2 maiden visits - *MS Regatta* and *Norwegian Jewel*.
- Cunard's *Queen Elizabeth* making her return visit to Newcastle on 1 March 2018.
- The largest cruise ship to visit the Port of Newcastle, *Celebrity Solstice*, visiting twice this season.
- A diverse range of cruise ship shapes and sizes, from the largest vessels in the Australian cruise market to smaller expedition style ships designed to carry smaller groups of passengers.



Approximately
17,500
passengers



2 Maiden visits



Shore tours to visit

Maitland,
Hunter Valley, Lake Macquarie,
Port Stephens, Central Coast, Newcastle

MARK YOUR CALENDAR

Visit www.portofnewcastle.com.au to view the cruise schedule.

IN THE COMMUNITY

Brass Blokes Award

Lifeline's Brass Blokes Awards recognise local 'blokes', who despite adversity, continue to give back to others.

Port of Newcastle was proud to partner with Lifeline in sponsoring the biennial event held at FogHorn Brewhouse, Newcastle.

Port of Newcastle's CEO, Geoff Crowe, said it was a privilege to hear the nominees' stories and acknowledged this year's winner, Charles Webster, of Chuck Duck Breakfast Club.

"Charles' story highlights the incredible spirit of resilience and generosity that the people of the Hunter region are renowned for.

"Congratulations to this year's Brass Blokes Award nominees for the extraordinary contribution you make to our local community," said Geoff.

New outdoor area provides respite for domestic violence survivors

The outdoor space at the Jenny's Place women's refuge has been transformed, thanks to a collaborative effort led by the University of Newcastle's School of Architecture and Built Environment.

The Port joined the University, the Newcastle Permanent Building Society and NSW Community Building Partnerships to fund a renovation of the play equipment and a seating area for mothers.

Port of Newcastle's CEO, Geoff Crowe, said it was great to see the community come together in support of Jenny's Place.

"The team at Jenny's Place provide invaluable support for vulnerable women and children in our community and I am proud that Port of Newcastle has been able to assist," said Geoff.



Pictured (top to bottom):

1. Port of Newcastle CEO - Geoff Crowe, Charles Webster - 2017 Brass Blokes Award winner and Graeme Irwin - 2014 Brass Blokes Award winner.
2. Marcia Chapman - Jenny's Place, Sarah Kiely - Port of Newcastle, Steven Weller - University of Newcastle, Graham Batten, Phil Neat and David Shanley - Newcastle Permanent, Professor SueAnne Ware - University of Newcastle/out(fit)

ACTIVE ENVIRONMENTAL STEWARDSHIP

The Port of Newcastle sits within an ecologically rich region.

We recognise our responsibility to manage operations in a way that minimises the impact on the local community.

Saltmarsh monitoring

Saltmarshes play a significant role in the aquatic food web, the delivery of nutrients to coastal waters as well as support for terrestrial animals, such as shore birds.

In NSW, saltmarsh is listed as an endangered ecological community under the Threatened Species Conservation Act 1995.

Port of Newcastle is conducting annual monitoring that will provide valuable data on the status and health of coastal salt marsh in the Lower Hunter River area.



Pictured: Saltmarsh monitoring - water quality testing.



BEYOND OUR BOUNDARIES

Since 2014 we have been active contributors to the management of local environmental initiatives.



\$50,000

committed to habitat restoration works within the Hunter Wetlands National Park

\$1.25 million per annum



invested in our local community
of which:

\$57,545



was provided in support of
environmental initiatives.



Port of Newcastle supports the
EPA's Lower Hunter
Air Quality Monitoring Network.



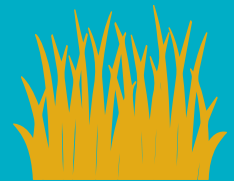
2,243

trees planted with the
Conservation Volunteers Australia tree
planting challenge in 2017.



46,433

tonnes of clean, dredged sand placed off shore
from Stockton Beach to help restore sand that
has been lost through erosion.



\$43,000

spent to date monitoring the health of
saltmarsh around the Port.

CONTACT US

6 Newcomen Street Newcastle NSW 2300
PO Box 790 Newcastle NSW 2300

P: +61 2 4908 8200
E: community@portofnewcastle.com.au
W: www.portofnewcastle.com.au

in [linkedin.com/portofnewcastle](https://www.linkedin.com/company/portofnewcastle)

